

EDITOR'S
CHOICEPATIENT'S
CHOICE

Microbleeds and post-stroke emotional lability

W K Tang,¹ Y K Chen,^{1,2} J Y Lu,¹ V C T Mok,² Y T Xiang,¹ G S Ungvari,¹ A T Ahuja,³
K S Wong²

¹ Department of Psychiatry, Chinese University of Hong Kong, Hong Kong SAR, China; ² Department of Medicine and Therapeutics, Chinese University of Hong Kong, Hong Kong SAR, China; ³ Department of Diagnostic Radiology and Organ Imaging, Chinese University of Hong Kong, Hong Kong SAR, China

Correspondence to:
Dr W K Tang, Department of Psychiatry, Shatin Hospital, Shatin, NT, Hong Kong SAR, China; tangwk@cuhk.edu.hk

Received 17 February 2009
Revised 24 May 2009
Accepted 27 May 2009
Published Online First
18 June 2009

ABSTRACT

Objective: The clinical significance of microbleeds (MBs) in the development of psychiatric conditions following a stroke is unknown. Lesions located in various cortical and subcortical areas are thought to be involved in the pathophysiology of post-stroke emotional lability (PSEL). This study examined the association between PSEL and MBs.

Methods: A total of 519 Chinese patients with acute ischaemic stroke consecutively admitted to the acute stroke unit of a university affiliated regional hospital in Hong Kong were screened for PSEL 3 months after their index stroke. The number and location of MBs were evaluated with MRI.

Results: According to Kim's criteria, 74 (14.3%) patients had PSEL. In comparison with the non-PSEL group, patients in the PSEL group were more likely to have MBs in the thalamus as a whole (16.2% vs 6.5%; $p = 0.004$), its anterior (6.9% vs 2.0%, $p = 0.02$) and paramedian territories (8.1% vs 3.1%; $p = 0.04$), and a higher number of MBs in the entire brain (1.7+3.4 vs 1.3+5.0; $p = 0.031$). MBs in the thalamus remained an independent predictor of PSEL in the multivariate analysis, with an odds ratio of 4.7 ($p = 0.002$).

Conclusion: Our results suggest that MBs in the thalamus may play a role in the development of PSEL. The importance of MBs in PSEL and other psychiatric conditions in stroke survivors warrants further investigation.

Cerebral microbleeds (MBs) are focal deposits of haemosiderin that indicate prior micro-haemorrhages. MBs are related to cerebral amyloid angiopathy, hypertension and atherosclerosis.¹

MBs are common in ischaemic stroke.² They may provide useful diagnostic and prognostic information, with potential therapeutic implications for the treatment of stroke.³ MBs are associated with advanced small artery disease of the brain⁴ and leukoaraiosis,⁵ and they may also predict recurrent stroke.⁶

MBs have generally been considered to be clinically silent. Recent evidence suggests that MBs may be one of the important factors that cause cognitive impairments in subcortical vascular dementia⁷ where they are associated with cognitive dysfunction, particularly executive dysfunction.⁸ The clinical significance of MBs in psychiatric conditions following a stroke remains unknown.

Emotional lability (EL) is defined as virtually uncontrollable episodes of laughter, crying or both.⁹ Laughing or crying occurs without a clear relationship to a stimulus or the outbursts can be triggered by minor, non-specific stimuli. In addition, patients may not experience any concomitant or subsequent change in feeling. EL is a distressing and embarrassing complaint for the patient, is

often socially disabling¹⁰ and may interfere with rehabilitation. Other terms that have been used for this clinical syndrome include emotionalism, pathological laughing and crying, pseudobulbar affect, pathological emotionality and emotional incontinence.^{9 11 12} Common methods of evaluating EL are clinical interviews, chart reviews, the Pathological Laughing and Crying Scale¹³ and other questionnaires.¹¹

EL affects 11–52% of all stroke survivors.^{11 14} Post-stroke emotional lability (PSEL) usually starts within weeks of a stroke,¹⁵ may last from 1 week to a few years,^{15 16} has a fluctuating clinical course¹² and may respond to selective serotonin reuptake inhibitors.¹⁷

The neuropathological substrate of EL has yet to be determined. Wilson¹⁸ proposed that it was caused by bilateral corticobulbar motor tract lesions. Recently, Parvizi and colleagues¹⁹ hypothesised that disconnection in the cortico-pontine-cerebellar pathways may also be an important link in the pathogenesis. Black²⁰ suggested three levels of injury (cortical, bulbar and hypothalamic) as possible causes of pathological laughter, with the common factor being disinhibition in the upper brainstem level. House and colleagues²¹ proposed that frontal lesions may produce disinhibition of emotional control similar to the way that frontal lobe damage produces disinhibition of social behaviour. EL has been found to co-occur with frontal release signs such as grasp reflex.²² Neuroimaging studies have shown that EL may be related to specific frontal areas, such as the anterior cingulate and dorsolateral prefrontal cortices²³ and the medial inferior frontal areas.²⁴ PSEL is associated with anterior cortical,^{9 25} frontal lobe²⁶ and lenticulocapsular lesions,⁹ particularly those that involve the dorsal globus pallidus.²⁷ Brainstem and parietal lesions can also generate EL.^{9 24 28}

The fronto-subcortical circuits are known to mediate emotion and affective behaviour.²⁹ These circuits link specific areas of the frontal cortex to the striatum, basal ganglia and thalamus.³⁰ Several lines of evidence suggest that the fronto-subcortical circuits are involved in the development of EL.^{23 24 26 27} Thalamic lesions can give rise to a variety of neuropsychiatric complications following stroke, including disinhibition, affective changes, apathy, amnesia and dementia.³¹

The role of MBs in PSEL is unknown. The aim of this case control study was to assess the relationship between MBs and PSEL in stroke survivors.

MATERIAL AND METHODS

Subjects

In total, 2337 patients with first ever or recurrent acute ischaemic stroke were admitted to the Acute

Table 1 Demographic, clinical and MRI variables of subjects with and without post-stroke emotional lability

Variable	PSEL (n = 74)	No PSEL (n = 445)	p Value
Age (years)*	65.6 (9.9)	65.6 (12.0)	0.982¶
Female sex (n (%))	38 (51.4)	168 (37.8)	0.027‡
Education (years)*	4.2 (4.5)	5.8 (4.8)	0.008¶
MMSE score*	24.8 (3.6)	26.3 (3.1)	<0.001†
NIHSS score*	5.4 (3.8)	4.3 (3.2)	0.004†
Previous stroke (n (%))	18 (24.3)	82 (18.2)	0.234‡
Presence of microbleeds (n (%))	24 (32.4)	100 (22.5)	0.063‡
No of microbleeds	1.7 (3.4)	1.3 (5.0)	0.031†
Localisation of microbleeds in (n (%))			
Frontal lobe	9 (12.2)	27 (6.1)	0.056‡
Temporal lobe	8 (10.8)	30 (6.7)	0.213‡
Parietal lobe	8 (10.8)	33 (7.4)	0.316‡
Occipital lobe	2 (2.7)	16 (3.6)	1.000§
Basal ganglia	8 (10.8)	39 (8.8)	0.570‡
Thalamus as whole	12 (16.2)	29 (6.5)	0.004‡
Anterior territory	5 (6.9)	9 (2.0)	0.020‡
Paramedian territory	6 (8.1)	14 (3.1)	0.040‡
Lateral territory	6 (8.1)	17 (3.8)	0.097‡
Posterior territory	4 (5.4)	10 (4.2)	0.125§
Brainstem	8 (10.8)	26 (5.8)	0.110‡
Cerebellum	5 (6.8)	31 (7.0)	1.000§

*Values are mean (SD).

†Mann-Whitney U test; ‡ χ^2 test; §Fisher exact test; ¶t test.

MMSE, Mini-Mental State Examination; NIHSS, National Institute of Health Stroke Scale; PSEL, post-stroke emotional lability.

Stroke Unit of the Prince of Wales Hospital from December 2004 to June 2007. The Prince of Wales Hospital is a university affiliated general hospital serving a population of 800 000 in Hong Kong. Of these, 874 of the admitted stroke patients received an MRI examination. Of patients with an MRI, 519 (59.4%) were recruited from patients admitted with a first ever or recurrent ischaemic stroke. The inclusion criteria for the study were: (1) Chinese ethnicity; (2) age 18 years or above; (3) well documented (clinical presentation and CT scan of the brain) first or recurrent acute stroke occurring within 7 days before admission; (4) Cantonese as the primary language; and (5) ability and willingness to give consent. Exclusion criteria included: (1) transient ischaemic attacks, since MBs are rare in transient ischaemic attacks⁴; (2) cerebral haemorrhage, subdural haematoma or subarachnoid haemorrhage; and (3) history of a central nervous system disease such as tumour, trauma, hydrocephalus, multiple sclerosis, Parkinson's disease, etc. All participants were screened for PSEL by a qualified psychiatrist (WKT).

The study protocol was approved by the Clinical Research Ethics Committee of the Chinese University of Hong Kong. Consent of all subjects was obtained in accordance with the Declaration of Helsinki.

Collection of demographic and clinical data

A research nurse, who was blind to the psychiatrist's diagnoses, collected the demographic data (age, sex and education level) and assessed the severity of stroke with the National Institute of Health Stroke Scale (NIHSS).³²

Assessment of PSEL

Psychiatric interviews were conducted 3 months after the stroke at a research clinic. A psychiatrist (WKT) administered a brief questionnaire to all participants. The diagnostic criteria of PSEL were based on those proposed by Kim.^{27–33} PSEL was

considered to be present if patients exhibited excessive or inappropriate laughing, crying or both compared with their premorbid state. If the patient agreed that excessive or inappropriate laughing or crying occurred on two or more occasions since the latest episode of stroke, the diagnosis of PSEL was established. A research assistant (RA), trained by the principal author, administered the Chinese version of the Mini-Mental State Examination (MMSE)³⁴ to measure the participants' global cognitive function.

Radiological examination

MRI, including diffusion weighted imaging (DWI) and sequence of proton density, was performed on each participant with a 1.5 T system (Sonata, Siemens Medical, Erlangen, Germany) within 7 days of admission.

DWI spin echo EPI (TR/TE/excitation = 180/122/4, matrix = 128×128, FOV = 230 mm, slice thickness/gap = 5 mm/1 mm, EPI factor = 90, acquisition time = 55 s) with three orthogonally applied gradients were used with a b value of 1000 and 500. Axial gradient echo images were acquired as the second sequence with imaging parameters of TR/TE/excitation = 350/30/2, flip angle of 30°, slice thickness/gap = 5 mm/0.5 mm, FOV = 230 mm, matrix 256×256 and acquisition time = 5 min 4 s. Axial SE T1 (TR/TE/excitation = 425/14/2, FOV = 230 mm, slice thickness/gap = 5 mm/0.5 mm, matrix = 256×256 and acquisition time = 4 min 28 s) and TSE T2 (TR/TE/excitation = 2500/120/1, turbo factor of 15, FOV = 230 mm, slice thickness/gap = 5 mm/0.5 mm, matrix of 256×256 and acquisition time = 1 min 39 s) images were also acquired.

A neurologist (YKC), who was blind to the psychiatric diagnoses, assessed the MRIs, which included the following.

1. *Brain infarcts*. Acute infarcts affecting the frontal, temporal, parietal and occipital lobes, coronary radiata, centrum semiovale, internal capsule, basal ganglia, thalamus,

Table 2 Demographic, clinical and magnetic resonance imaging variables of subjects with and without post-stroke emotional lability

Variable	PSEL (n = 74)	No PSEL (n = 445)	p Value
No of acute infarcts*	1.5 (2.2)	1.4 (2.1)	0.604†
Volume of acute infarct (cm ³)*	4.0 (16.1)	1.6 (4.3)	0.200†
Localisation of acute infarcts in (n (%))			
Frontal lobe	7 (9.5)	25 (5.6)	0.203‡
Temporal lobe	2 (2.7)	16 (3.6)	0.698§
Parietal lobe	4 (5.4)	30 (6.7)	0.804§
Occipital lobe	3 (4.1)	9 (4.0)	0.392§
Basal ganglia	18 (24.3)	90 (20.2)	0.421‡
Thalamus	3 (4.1)	26 (5.8)	0.784§
Brain stem	14 (18.7)	61 (13.7)	0.238‡
Cerebellum	1 (1.4)	7 (1.6)	1.000§
Coronary radiate	9 (12.2)	62 (13.9)	0.682‡
Centrums semiovale	4 (5.4)	19 (4.3)	0.555§
Internal capsule	11 (14.9)	59 (13.3)	0.708‡
No of old infarcts*	0.9 (1.5)	0.9 (1.7)	0.977†
Location of old infarcts (n (%))			
Frontal lobe	1 (1.4)	10 (2.2)	1.000§
Temporal lobe	2 (2.7)	8 (1.8)	0.641§
Parietal lobe	3 (4.1)	8 (1.8)	0.197§
Occipital lobe	1 (1.4)	7 (1.6)	1.000§
Basal ganglia	18 (24.3)	90 (20.2)	0.421‡
Thalamus	7 (9.5)	27 (6.1)	0.275‡
Brain stem	2 (2.7)	19 (4.3)	0.753§
Cerebellum	0 (0.0)	6 (1.3)	0.601§
Coronary radiate	9 (12.2)	42 (9.4)	0.466‡
Centrums semiovale	3 (4.1)	11 (2.5)	0.434§
Internal capsule	4 (5.4)	25 (5.6)	1.000§
Lacunar infarcts			0.573‡
Presence of lacunar infarcts (n (%))	44 (59.5)	249 (56.0)	0.626†
No of lacunar infarcts*	1.4 (1.8)	1.3 (1.9)	
White matter lesions			
DWMH score*	1.09 (0.90)	1.01 (0.80)	0.469†
PVH score*	1.23 (0.71)	1.24 (0.84)	0.962†

*Values are mean (SD).

†Mann-Whitney U test; ‡ χ^2 test; §Fisher exact test.

DWMH, deep white matter hyperintensities; MMSE, Mini-Mental State Examination; NIHSS, National Institute of Health Stroke Scale; PSEL, post-stroke emotional lability; PVH, periventricular hyperintensities.

- brainstem and cerebellum were recorded.³⁵ The presence or absence of acute infarcts in these locations was recorded. Multiple infarcts or infarct(s) involving more than one location were counted in all locations they occurred. The total area of acute infarcts on DWI was measured with manual outlines, with restricted water diffusion identified on diffusion weighted images with b values of 1000. The total volume was calculated by multiplying the total area by the sum of the slice thickness and gap.
2. *MBs*. MBs were defined as small (2–10 mm) hypointense lesions on T2 weighted gradient echo sequence but symmetric basal ganglia calcification and flow void artefacts of the pial blood vessels were excluded.³⁶ The locations of MBs included the frontal, parietal, temporal and occipital lobes, basal ganglia, thalamus as a whole and its anterior, paramedian, lateral and posterior territories,³⁷ brainstem and cerebellum. The number of MBs in each location was recorded. Inter-rater and intra-rater reliability tests of the measurement of MBs were performed on 30 participants. Inter-rater and intra-rater agreement was good (presence of MBs: inter-rater kappa = 0.78; intra-rater kappa = 0.85; number of MBs: inter-rater intraclass correlation coefficient (ICC) = 0.91; intra-rater ICC = 0.95).

3. *White matter lesions (WML)*. The severity of WMLs was graded using the four point scale developed by Fazekas and colleagues.³⁸ Periventricular and deep white matter hyperintensities were scored on axial proton density images. Inter-rater and intra-rater reliability tests were performed on 20 participants resulting in good agreement (kappa = 0.70–1.00).

Statistical analysis

All statistical tests were performed by SPSS for Windows (release 14.0; SPSS Inc, Chicago, Illinois, USA). Demographic and clinical variables (age, sex, education level, and NIHSS and MMSE scores) and the scores of the psychometric tests of the PSEL subjects were compared with those of matched controls using the χ^2 test, Fisher's exact test, Student's t test and the Mann-Whitney U test, as appropriate. Risk factors with a value of $p < 0.10$ were then analysed by multivariate logistic regression analysis using a forward stepwise selection strategy. If the correlations between any of these putative risk factors were ≥ 0.50 , then additional models were examined to rule out co-linearity. In the analysis, the odds ratio of any independent risk factor was interpreted as the risk of subsequent PSEL when all

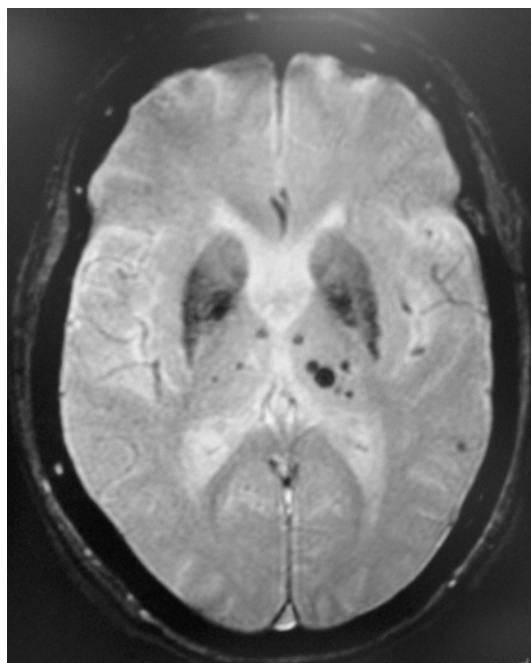


Figure 1 T2⁺ weighted gradient echo MRI of a 78-year-old woman with post-stroke emotional lability shows multiple microbleeds in bilateral thalami (most in the left), ranging from 2 to 8 mm in diameter.

other risk factors were held constant. The level of significance was set at 0.05.

RESULTS

Patient who were excluded from the study were older (73.9 (12.0) vs 66.0 (11.7) years; $p < 0.001$), were more likely to be female (52.8% vs 39.3%; $p < 0.001$) and had a higher NIHSS score (10.1 (9.3) vs 4.5 (3.4); $p < 0.001$).

Of the 519 patients screened, 74 (14.3%) had PSEL. The demographic and MRI characteristics and stroke related data stratified by PSEL status are shown in tables 1 and 2. The PSEL group had significantly more female subjects, a lower level of education and lower MMSE but higher NIHSS scores. The number of MBs was significantly higher in the PSEL group. MBs located in the thalamus were associated with PSEL, particularly the anterior and paramedian territories (fig 1). The number of MBs in the thalamus of subjects with PSEL ranged from 1 to 10, with a mean of 3.2 (2.7). The association between MBs in the entire brain and in the frontal lobe and PSEL was of borderline significance. PSEL was not associated with the volume and location of infarcts, number of lacunar infarcts or the extent of WMLs.

Table 3 Multivariate logistic model of the clinical and radiological determinants of post-stroke emotional lability

	β	p Value	OR (95% CI)
Microbleeds in thalamus	1.542	0.002	4.676 (1.743–12.544)
MMSE	-0.111	0.009	0.895 (0.823–0.972)
NIHSS	0.079	0.050	–
Microbleeds in frontal lobe	0.956	0.063	–
Sex (female)	0.517	0.076	–
No of microbleeds	-0.090	0.093	–

MMSE, Mini-Mental State Examination; NIHSS, National Institute of Health Stroke Scale.

MMSE score and education were correlated ($r = 0.569$, $p < 0.01$). The correlation between MBs in the thalamus and MBs in the entire brain was 0.524 ($p < 0.01$). The following variables were entered into the regression model: sex, MMSE, NIHSS and MBs in the thalamus, and the frontal lobe and number of MBs. MBs in the thalamus and MMSE were significant independent predictors of PSEL. The odds ratio of MBs in the thalamus was 4.7 (table 3).

DISCUSSION

To the best of our knowledge, this was the first study to examine the role of MBs in stroke patients with EL. This observation challenges the prevailing view that microbleeds are clinically silent.⁴ The histopathological data revealed that MBs involve not only haemosiderin deposition but also affect the surrounding gliosis and cause frank necrosis or infarction, which means that they may be of clinical importance.³⁹

The findings of this study suggest that microhaemorrhages are important components of the pathomechanism of PSEL. PSEL was associated with MBs in the thalamus, particularly the anterior and paramedian territories. The thalamus can be divided into different regions, according to the pattern of blood supply. The paramedian territory is supplied by the thalamo-perforating arteries, which originate from the first part of the posterior cerebral artery.³⁷ The paramedian thalamic territory has connections between cortical (prefrontal, orbitofrontal and mediofrontal cortex) and subcortical (ventral pallidum and internal globus pallidus) structures.^{40–41} Paramedian thalamic lesions can cause personality changes and disinhibition,⁴² such as crying spells, labile affect and even frank manic symptoms.⁴³ It is thought that these behavioural symptoms were due to thalamofrontal disconnection.³¹ A wide range of behavioural and personality changes have been associated with lesions in the anterior territory, including euphoria, lack of emotional concern and emotional central facial paralysis. The latter is characterised by a facial weakness during emotional displays such as laughing or crying.⁴⁴ Patients with executive dysfunction have more microbleeds in the frontal region.⁸ There is evidence suggesting that executive functions are impaired in patients with EL.^{44–45} Further exploration of the relationship between MBs in the frontal lobe, executive functions and PSEL is warranted.

The main limitation of this study is its relatively small sample size, which resulted in a low power in detecting the potential differences between groups with respect to frontal lobe MBs. Furthermore, the assessment of PSEL was made only once, at the 3 month follow-up. As patients who died before the 3 month follow-up were not included in the study, the sample was biased to an unknown degree. In addition, patients who could not give consent due to dementia or aphasia associated left side infarcts were excluded. The excluded group had more female patients, they were older and had more severe stroke. As cognitive impairment,²¹ left side lesions,²¹ female sex,⁹ younger age¹⁴ and neurological deficits⁹ were associated with PSEL, this selection bias may limit the generalisability of the findings.

It is interesting to note that thalamic MBs, a pre-stroke lesion, can contribute to the development of an event such as EL after stroke. It is well known that pre-stroke abnormalities do contribute to post-stroke psychiatric problems, including dementia and depression. WMLs and cerebral atrophy predict post-stroke dementia.⁴⁶ Similarly, WMLs predict post-stroke depressive symptoms.⁴⁷

In conclusion, the results of this study suggest that MBs at the thalamus may contribute to the development of PSEL. This assumption, while biologically plausible, should be regarded as

speculative at this point. Further exploration of the importance of MBs in PSEL and other psychiatric sequels in stroke survivors is clearly warranted.

Funding: This work was supported by a direct grant for research 2005/2006 from the Chinese University of Hong Kong.

Competing interests: None.

Ethics approval: The study protocol was approved by the Clinical Research Ethics Committee of the Chinese University of Hong Kong.

Provenance and peer review: Not commissioned; externally peer reviewed.

REFERENCES

- Vernooij MW, van der Lugt A, Ikram MA, et al. Prevalence and risk factors of cerebral microbleeds: the Rotterdam Scan Study. *Neurology* 2008;**70**:1208–14.
- Werring DJ, Coward LJ, Losseff NA, et al. Cerebral microbleeds are common in ischemic stroke but rare in TIA. *Neurology* 2005;**65**:1914–18.
- Cordonnier C, Al-Shahi Salman R, Wardlaw J. Spontaneous brain microbleeds: systematic review, subgroup analyses and standards for study design and reporting. *Brain* 2007;**130**:1988–2003.
- Kato H, Izumiya M, Izumiya K, et al. Silent cerebral microbleeds on T2*-weighted MRI: correlation with stroke subtype, stroke recurrence, and leukoariosis. *Stroke* 2002;**33**:1536–40.
- Gao T, Wang Y, Zhang Z. Silent cerebral microbleeds on susceptibility-weighted imaging of patients with ischemic stroke and leukoariosis. *Neuro Res* 2008;**30**:272–6.
- Naka H, Nomura E, Takahashi T, et al. Combinations of the presence or absence of cerebral microbleeds and advanced white matter hyperintensity as predictors of subsequent stroke types. *Am J Neuroradiol* 2006;**27**:830–5.
- Won SS, Hwa LB, Kim EJ, et al. Clinical significance of microbleeds in subcortical vascular dementia. *Stroke* 2007;**38**:1949–51.
- Werring DJ, Frazer DW, Coward LJ, et al. Cognitive dysfunction in patients with cerebral microbleeds on T2*-weighted gradient-echo MRI. *Brain* 2004;**127**:2265–75.
- Kim JS, Choi KS. Poststroke depression and emotional incontinence: correlation with lesion location. *Neurology* 2000;**54**:1805–10.
- Andersen G, Vestergaard K, Riis JO. Citalopram for post-stroke pathological crying. *Lancet* 1993;**342**:837–9.
- Schiffer R, Pope LE. Review of pseudobulbar affect including a novel and potential therapy. *J Neuropsychiatry Clin Neurosci* 2005;**17**:447–54.
- Dark FL, McGrath JJ, Ron MA. Pathological laughing and crying. *Aust N Z J Psychiatry* 1996;**30**:472–9.
- Robinson RG, Parikh RM, Lipsey JR, et al. Pathological laughing and crying following stroke: validation of a measurement scale and a double-blind treatment study. *Am J Psychiatry* 1993;**150**:286–93.
- Tang WK, Chan SSM, Chiu HFK, et al. Emotional incontinence in Chinese stroke patients: diagnosis, frequency, and clinical and radiological correlates. *J Neurol* 2004;**251**:865–9.
- Kim JS. Pathologic laughter after unilateral stroke. *J Neurol Sci* 1997;**148**:121–5.
- Ceccaldi M, Poncet M, Milandre L, et al. Temporary forced laughter after unilateral strokes. *Eur Neurol* 1994;**34**:36–9.
- Brown KW, Sloan RL, Pentland B. Fluoxetine as a treatment for post-stroke emotionalism. *Acta Psychiatr Scand* 1998;**98**:455–8.
- Wilson SAK. Some problems in neurology. *J Neurol Psychopathol* 1924;**4**:299–333.
- Parvizi J, Anderson SW, Martin CO, et al. Pathological laughter and crying: a link to the cerebellum. *Brain* 2001;**124**:1708–19.
- Black DW. Pathological laughter: a review of literature. *J Nerv Ment Dis* 1982;**170**:67–71.
- House A, Dennis M, Molyneux A, et al. Emotionalism after stroke. *BMJ* 1989;**298**:991–4.
- Langworthy OR, Hesser FH. Syndrome of pseudobulbar palsy. Anatomic and physiologic analysis. *Arch Intern Med* 1940;**64**:106–21.
- Malloy P, Bihrl A, Duffy J. The orbitomedial frontal syndrome. *Arch Clin Neuropsychol* 1993;**8**:185–201.
- Ghaffar O, Chamelien L, Feinstein A. Neuroanatomy of pseudobulbar affect: a quantitative MRI study in multiple sclerosis. *J Neurol* 2008;**255**:406–12.
- Morris PLP, Robinson RG, Raphael B. Emotional lability after stroke. *Aust N Z J Psychiatry* 1993;**27**:601–5.
- Ross ED, Stewart RS. Pathological display of affect in patients with depression and right frontal brain damage. An alternative mechanism. *J Nerv Ment Dis* 1987;**175**:165–72.
- Kim JS. Post-stroke emotional incontinence after small lenticulocapsular stroke: Correlation with lesion location. *J Neurol* 2002;**249**:805–10.
- Asfora WT, DeSalles AA, Abe M, et al. Is the syndrome of pathological laughing and crying a manifestation of pseudobulbar palsy? *J Neurol Neurosurg Psychiatry* 1989;**52**:523–5.
- Cummings JL. Frontal-subcortical circuits and human behaviors. *Arch Neurol* 1993;**50**:873–80.
- Tekin S, Cummings JL. Frontal-subcortical neuronal circuits and clinical neuropsychiatry: an update. *J Psychosom Res* 2002;**53**:647–54.
- Carrera E, Bogousslavsky J. The thalamus and behavior: effects of anatomically distinct strokes. *Neurology* 2006;**66**:1817–23.
- Brott T, Marler JR, Olinger CP, et al. Measurement of acute cerebral infarctions: a clinical examination scale. *Stroke* 1989;**20**:864–70.
- Choi-Kwon S, Han SW, Kwon SU, et al. Fluoxetine treatment in poststroke depression, emotional incontinence, and anger proneness: a double-blind, placebo-controlled study. *Stroke* 2006;**37**:156–61.
- Chiu HFK, Lee HCB, Chung D. Reliability and validity of the Cantonese version of the Mini-Mental State Examination: a preliminary study. *Hong Kong J Psychiatry* 1994;**4**:25–8.
- Mok VC, Wong A, Lam WW, et al. Cognitive impairment and functional outcome after stroke associated with small vessel Dis. *J Neurol Neurosurg Psychiatry* 2004;**5**:560–6.
- Dichgans M, Holtmannspotter M, Herzog J, et al. Cerebral microbleeds in CADASIL: a gradient-echo magnetic resonance imaging and autopsy study. *Stroke* 2002;**33**:67–71.
- Carrera E, Michel P, Bogousslavsky J. Anteromedian, central and posterolateral territory infarcts of the thalamus. Three variant types. *Stroke* 2004;**35**:2826–34.
- Fazekas F, Chawluk JB, Alavi A, et al. MR signal abnormalities at 1.5 T in Alzheimer's dementia and normal aging. *Am J Roentgenol* 1987;**149**:351–6.
- Tanaka A, Ueno Y, Nakayama Y, et al. Small chronic hemorrhages and ischemic lesions in association with spontaneous intracerebral hematomas. *Stroke* 1999;**30**:1637–42.
- Guigere M, Goldman-Rakic PS. Mediodorsal nucleus: areal, laminar, and tangential distribution of afferents and efferents in the frontal lobe of rhesus monkey. *J Comp Neurol* 1988;**277**:195–213.
- Groenewegen HJ, Berendse HW. The specificity of the "nonspecific" midline and intralaminar nuclei. *Trends Neurosci* 1994;**17**:52–6.
- Bogousslavsky J, Ferrazzini M, Regli F, et al. Manic delirium and frontal-like syndrome with paramedian infarction of the right thalamus. *J Neurol Neurosurg Psychiatry* 1988;**51**:116–19.
- Gilchrist I, Goldstein LH, Jadresic D, et al. Thalamo-frontal psychosis. *Br J Psychiatry* 1993;**163**:113–15.
- Schmahmann JD. Vascular syndromes of the thalamus. *Stroke* 2003;**34**:2264–78.
- McCullagh S, Moore M, Gawel M, et al. Pathological laughing and crying in amyotrophic lateral sclerosis: an association with prefrontal cognitive dysfunction. *J Neurol Sci* 1999;**169**:43–8.
- Tang WK, Sandra S, Chan M, et al. Frequency and clinical determinants of poststroke dementia in Chinese. *Stroke* 2004;**35**:98–103.
- Verdelho A, Henon H, Lebert F, et al. Depressive symptoms after stroke and relationship with dementia: a three-year follow-up study. *Neurology* 2004;**62**:905–11.

Information for patients from JNNP

Clue to cause of laughter and tears after stroke

Doctors have identified a possible cause for a distressing condition that some people get after having a stroke. They think that sudden uncontrollable laughter or crying may be caused by bleeding from tiny blood vessels in the brain.

What do we know already?

As many as half of the people who have a stroke get a condition called 'emotional lability' afterwards. It means that you have episodes of laughing or crying uncontrollably, often without anything in particular starting it off. This can be distressing. People feel embarrassed about it and may worry that they're going mad. Some people refuse to go out, because they're so worried about it happening. It usually starts within weeks of having a stroke, and people can get episodes during anything from a week to several years after the stroke.

One theory is that it's caused by minor damage to certain areas of the brain. In a new study, doctors did brain scans of patients who'd had a stroke, and asked them about emotional lability symptoms like uncontrollable laughter or crying. They looked to see whether signs of minor bleeds (called microbleeds) in particular parts of the brain were more common in people with emotional lability.

What does the new study say?

People with emotional lability were more likely to have signs of microbleeds in a particular part of the brain, called the thalamus. That backs up the theory that these bleeds may be part of the cause of uncontrollable laughter or crying.

But it's not likely to be the only cause. 16 in 100 people with emotional lability had microbleeds in the thalamus, compared with 6 in 100 people who didn't have emotional lability. So, many people with this condition didn't have this type of bleeding, and some people without emotional lability did have bleeding.

How reliable are the findings?

The study was carried out carefully, but it was quite small (only 519 people) and people with more severe stroke symptoms were not included. The

researchers say that more study is needed before we can say whether microbleeds in the thalamus part of the brain are a cause of emotional lability.

Where does the study come from?

The study was carried out by researchers at the University of Hong Kong, China.

What does this mean for me?

If you or someone you care for experiences these symptoms, it may be a relief to know that they're quite common. This study suggests they are related to a physical cause in the brain, not a psychological problem. You may find this reassuring.

What should I do now?

There's no need to take any action as a result of this study. If you are concerned about symptoms like uncontrollable laughing or crying, either for yourself or someone you're caring for, speak to your doctor. Some people find antidepressant medicines help to keep the symptoms under control.

You can access the full article for free online

Microbleeds and post-stroke emotional incontinence. Authors: Tang WK, Chen YK, Lu JY, *et al.* *J Neurol Neurosurg Psychiatry*. 2009;**80**:1082–1086.
<http://jnnp.bmj.com/cgi/content/full/80/10/1082>

This summary was prepared by the staff of Best Health, BMJ Group's patient information service. This information does not replace medical advice. If you have a medical problem please see your doctor.

The logo for BestHealth, featuring the word "BestHealth" in a blue sans-serif font. Below the text is a horizontal line of seven blue dots.