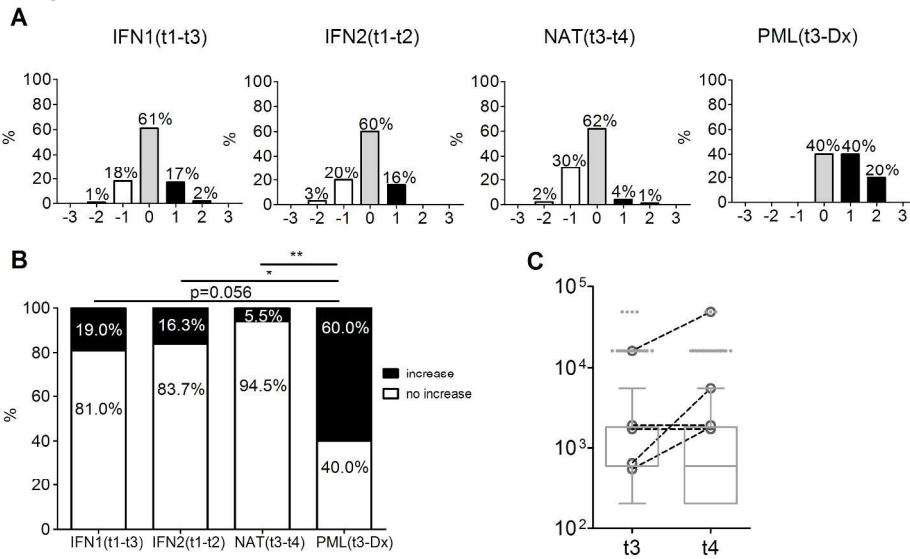


eFigure 2



eFigure 2. Changes to anti-JCV dilution titers of the NAT-group, the IFN-subgroups, and the PML patients. A shows the percentage of anti-JCV positive patients with decreasing (white), not changing (grey), or increasing (black) dilution titer levels in the different groups (NAT-group: comparing t3 and t4; IFN1-subgroup: comparing t1 and t3; IFN2-subgroup: comparing t1 and t2; 5 PML patients: comparing t3 and at diagnosis). On the x-axis, the amount of change in titer levels is given. In B, the proportions of patients with increasing dilution titers are compared between the groups. In C, the distribution of the dilution titers (200=first titer level; 600=second titer level; 1800=third titer level etc.) is shown for the anti-JCV positive patients of the NAT-group (grey) as box and whiskers, and the 5 PML patients at t3 and at time of diagnosis of PML as symbols and lines. box: interquartile range; horizontal line: median; whiskers: 5-95 percentile.

*p<0.05; **p<0.01 (Fisher's exact test).

287x179mm (300 x 300 DPI)